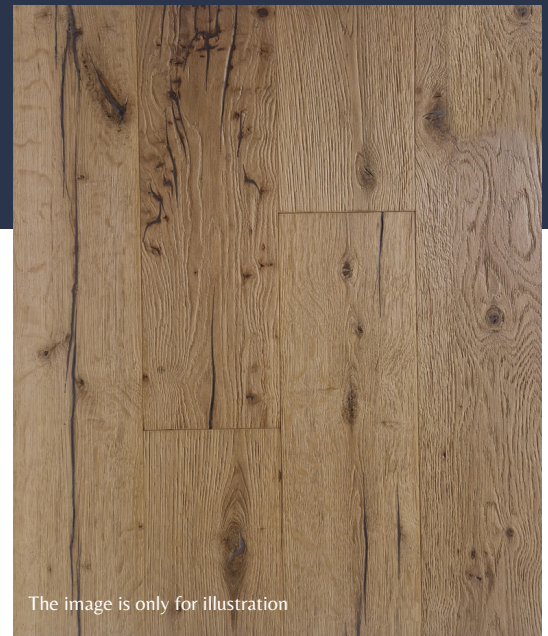


# OLD ENGLISH

## DATA SHEET

### GENERAL DETAILS

Colour Code	xxxxxxx
Product Range	Old English
Oak Type	European Oak
Plywood Source	Central European
Construction	Rustic = Eucalyptus Plywood
Style	Plank
Jointing System	Tongue & Groove all 4 edges
Plank Edge Profile	Standard 4 way eased bevel
Blocks Edge Profile	4-sided Bevelled Edge



The image is only for illustration

### DIMENSIONS

Available in	190 x 20/6mm x 1.9m 1.80m <sup>2</sup> per pack
	220 x 15/4mm x 2.2m 2.90m <sup>2</sup> per pack

### TECHNICAL

Moisture Content: Between 8-11%  
 Slip Rating: Low Risk Dry, High Risk Wet  
 Fire Rating: dfl - S1  
 Janka Hardness Rating: 1,120 lbf (4980N)  
 Humidity requirements: Between 40 & 60% relative humidity  
 Thermal conductivity:  $\lambda=0,17$  W/mK  
 Formaldehyde Emission: E1  
 Maintenance: JSW Kit

### GRADING

#### Rustic Heavy Brushed & Distressed

Our Old English boards are heavily brushed & distressed. This gives a worn, old world feel to recreate the look of reclaimed flooring.

Knot content: Unlimited healthy knots allowed, filled cracked knots allowed. Filled dead knots up to allowed. Unlimited total knots allowed.

Other traits: Open splits and cracks.

### OFFERING 2 DIFFERENT FORMATS OF FLOORING

### QUICK SUMMARY

- Bespoke European Engineered Oak
- Rustic Grade only
- 15/4mm or 20/6mm
- Planks width 190mm & length 1.9m
- Planks width 220mm & length 2.2m
- Suitable for underfloor heating
- Glued is preferred installation  
Planks can be floated
- Flooring accessories available to compliment the floor
- Matching Stair Treads & Risers available



The image is only for illustration



Plank 220mm

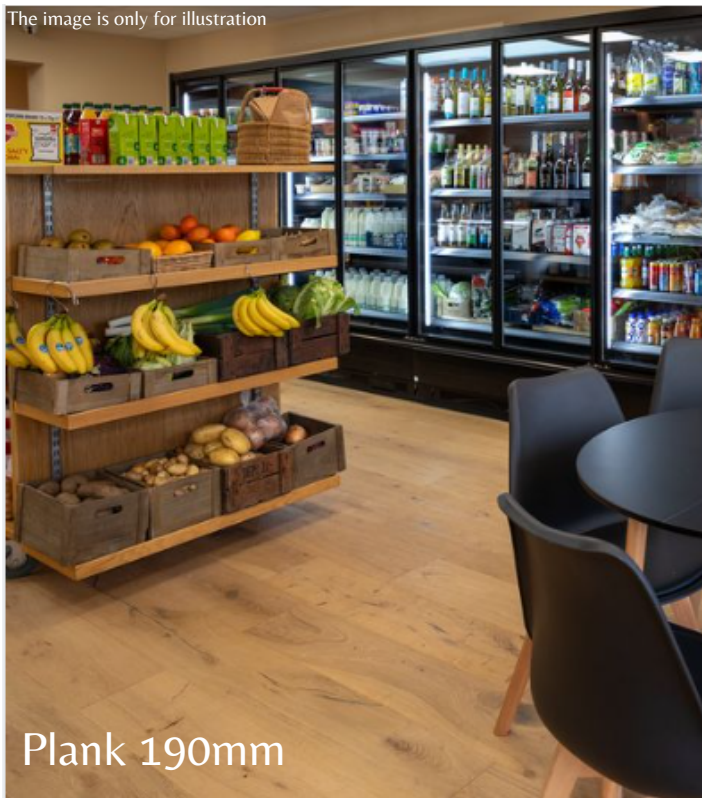
The image is only for illustration



Plank 220mm

# *Contract Collection*

The image is only for illustration



Plank 190mm

## **AVAILABLE IN THE BELOW OPTIONS**

Plank  
190 x 20/6mm Rustic or 220 x 15/4mm Rustic

**TO ENQUIRE PLEASE QUOTE  
CODE "OLD ENGLISH"**

